

Guest_Access_to_Wireless

Beginning on 9/11/08, Guests are now able to access MCC's wireless network without a username and password. Guests are able to do basic things such as check web-based email and browse websites, but tasks such as connecting to file shares, using FTP, or accessing printers on campus are not permitted.

In order to access the wireless network as a guest, you will need to set your wireless device to connect to the network (ssid) named **guest**. The network name must be entered as all lowercase letters.

TCP/UDP Port Information


For those that may be curious about what network ports are available through guest access, please see the following:

- TCP Ports 264, 80, and 443
 - UDP Ports 500, 259, and 53
-

Instructions for Connecting to the Guest Wireless Network (Windows Vista)


MCC offers guest wireless access to Faculty, Staff, Students, and visitors to our campus. The **guest** network provides limited functionality, including access to HTTP, HTTPS, DNS, and web-based e-mail. Faculty/Staff and Students requiring more enhanced functionality will want to connect to the **mccemp** or **mesacc** networks (respectively) instead. These instructions will assist you in configuring your Windows Vista computer to connect to the **guest** network.

Note: These instructions demonstrate how to connect to our **guest** network when using a computer that lets Windows Vista manage the wireless connection. Your computer may use software provided by the manufacturer of the wireless card in your laptop to manage the wireless connections. If that is the case, please consult the manual or built-in help system provided by the developer of the software for information on how to configure your wireless software.

Step 1: Position your mouse cursor over the networking icon  in your system tray. Windows will inform you that there are wireless networks available.

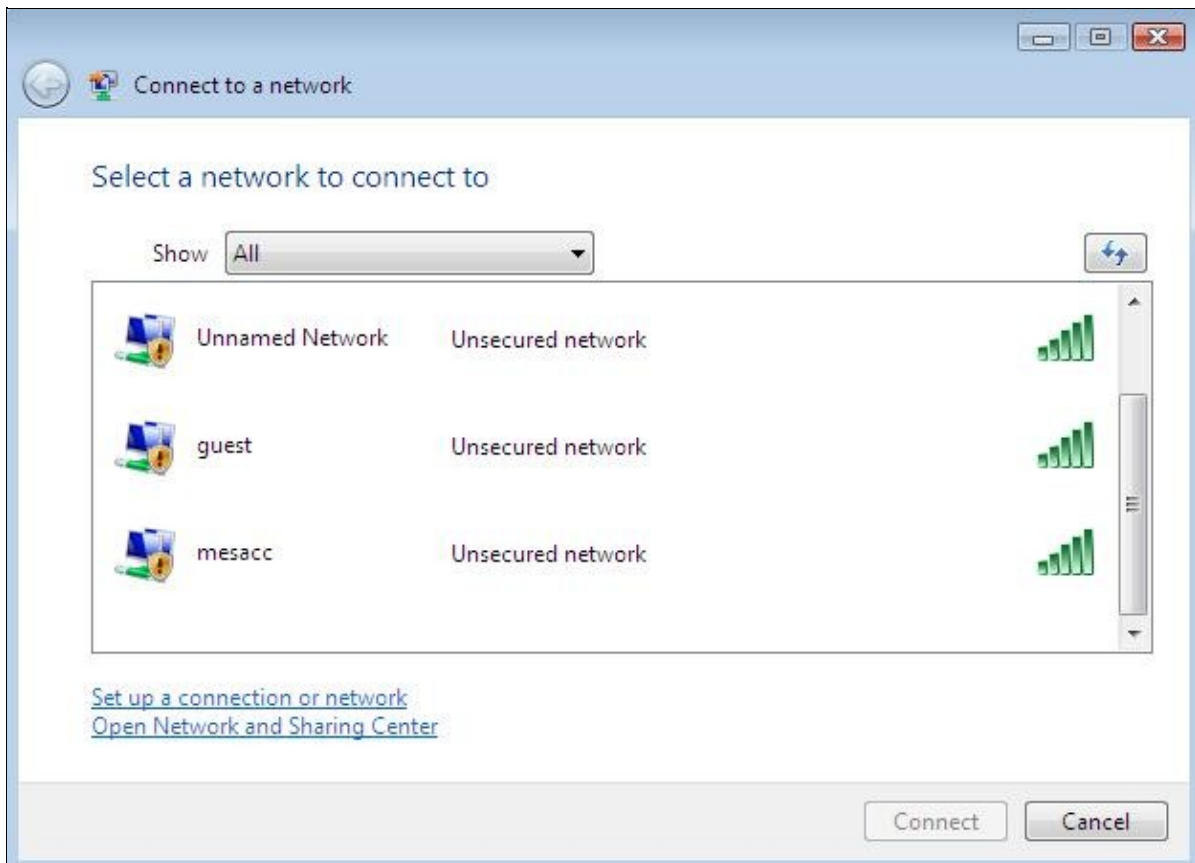


Guest_Access_to_Wireless

Step 2: Click on the networking icon  once and choose "Connect to a network" on the menu it provides to you.

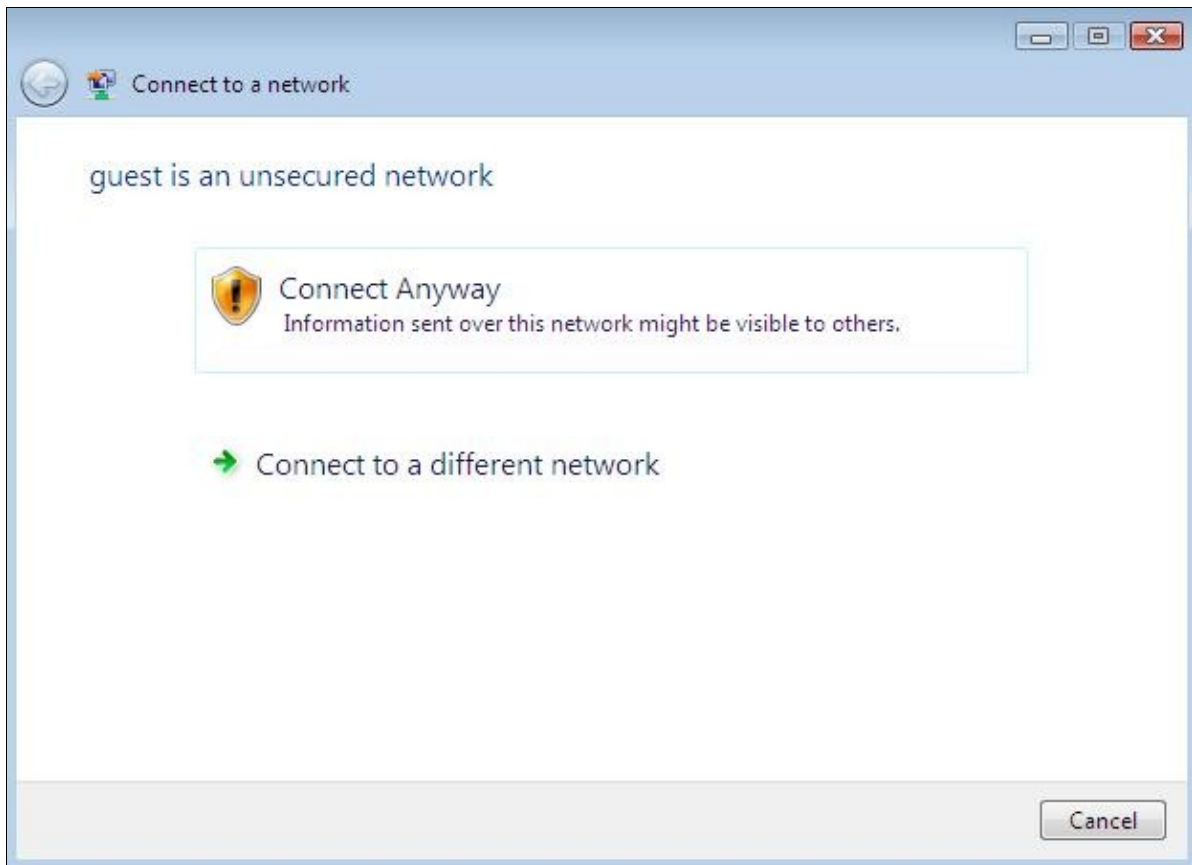


Step 3: The screen provided will show you the networks detected by your wireless device. Choose the network named **guest** and click "Connect".



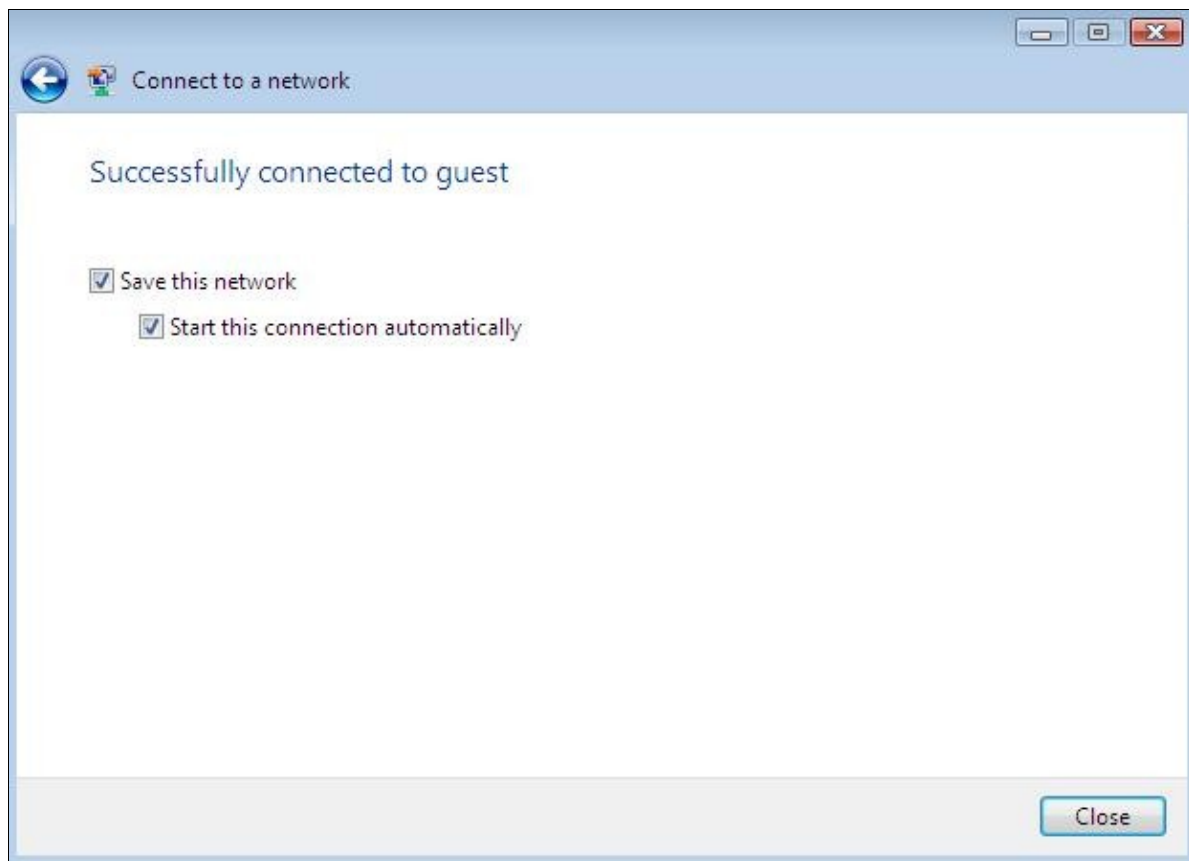
Step 4: You will be notified that the **guest** network is an unsecured network. Choose "Connect Anyway".

Guest_Access_to_Wireless



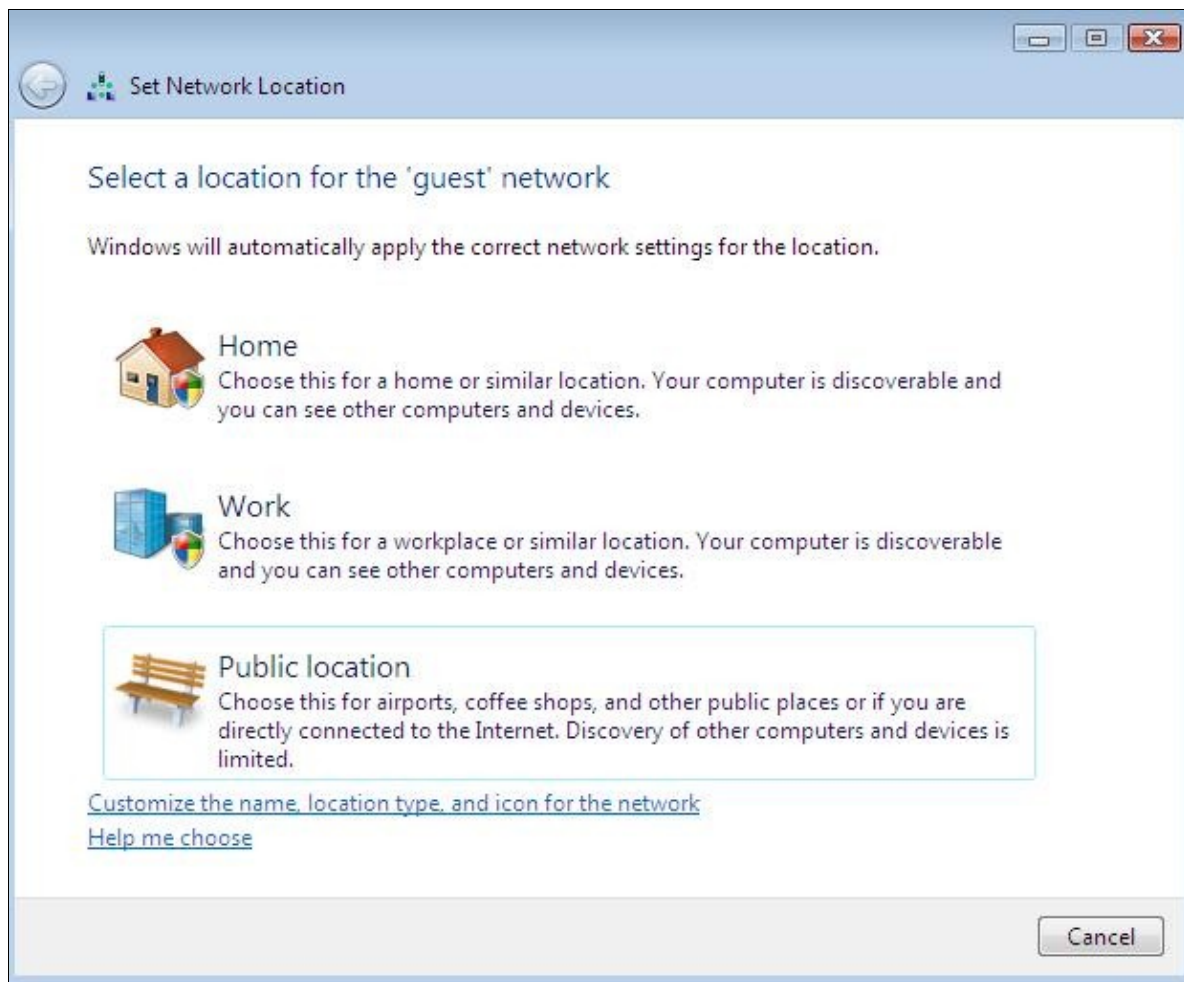
Step 5: At the next screen, choose to "Save this network". Optionally, you can choose to have Windows "Start this connection automatically" when in range.

Guest_Access_to_Wireless



Step 6: At the "Set Network Location" screen, choose "Public location".

Guest_Access_to_Wireless



Step 7: Windows will provide you with a screen letting you know that the settings were applied successfully. Click "Close". You are now able to browse the Internet using Internet Explorer or other browser.

Guest_Access_to_Wireless

