

## How\_to\_Identify\_what\_Version\_of\_Symantec\_Antivirus\_is\_on\_your\_Computer

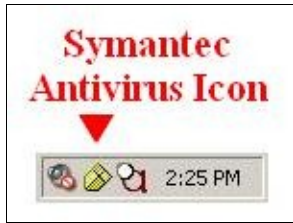


Figure 1

Find the yellow Symantec Antivirus icon in your *System Tray*. The System Tray is located on the bottom right of your screen where your computer's clock is. See *Figure 1* for an illustration. Double click on this icon.

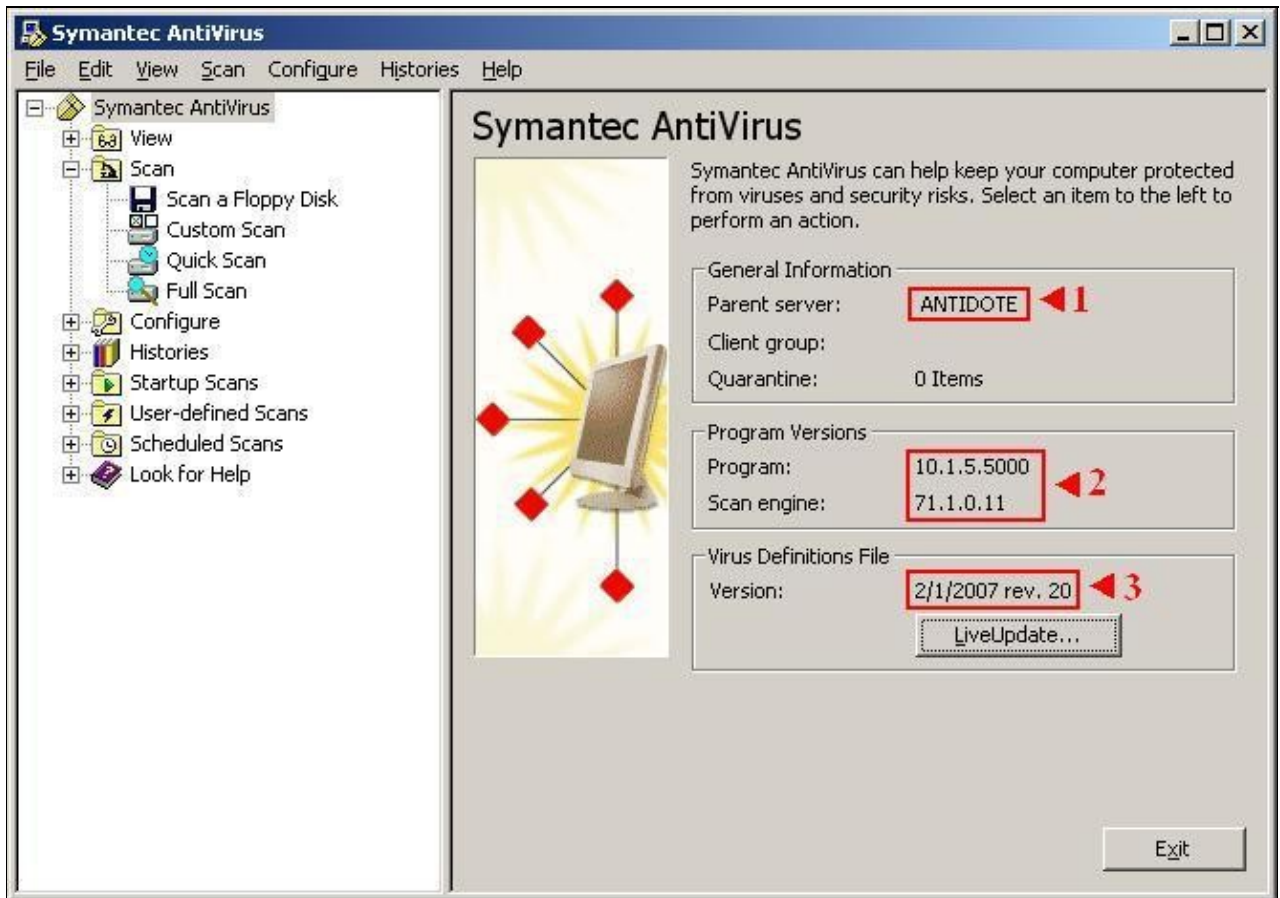


Figure 2

A window similar to the one displayed in *Figure 2* should now be on your screen. Please note the three highlighted items in the illustration.

1. The **Parent Server**: For on-campus computers this will either say **Antidote** or **Antigen**. MCC at Red Mountain and other remote campus computers will say **RDM-BIO**. School owned laptops may not have a parent server, and that is OK.
2. The **Program** and **Scan Engine** versions: The version numbers displayed here should be *at least* what you see in this illustration. If your version numbers are lower than what is displayed here, please contact Technology Support Services and report it to us.

## How\_to\_Identify\_what\_Version\_of\_Symantec\_Antivirus\_is\_on\_your\_Computer

3. The **Virus Definitions** version: The date displayed here should **always** be within seven days of the current date. If it is older than that, please [contact Technology Support Services](#) and report it to us.
-