

IPTV_Setup_for_PCs_(Windows)

Download the IPTV viewer to your desktop (25MB). After the download, you should see this icon:



Double click on this icon - this will start the installation process. You will see this screen:



Click the "next" button at the bottom. Several screens will go by automatically until this screen appears:

IPTV_Setup_for_PCs_(Windows)



Click the "next" button at the bottom. This will bring you to this screen:

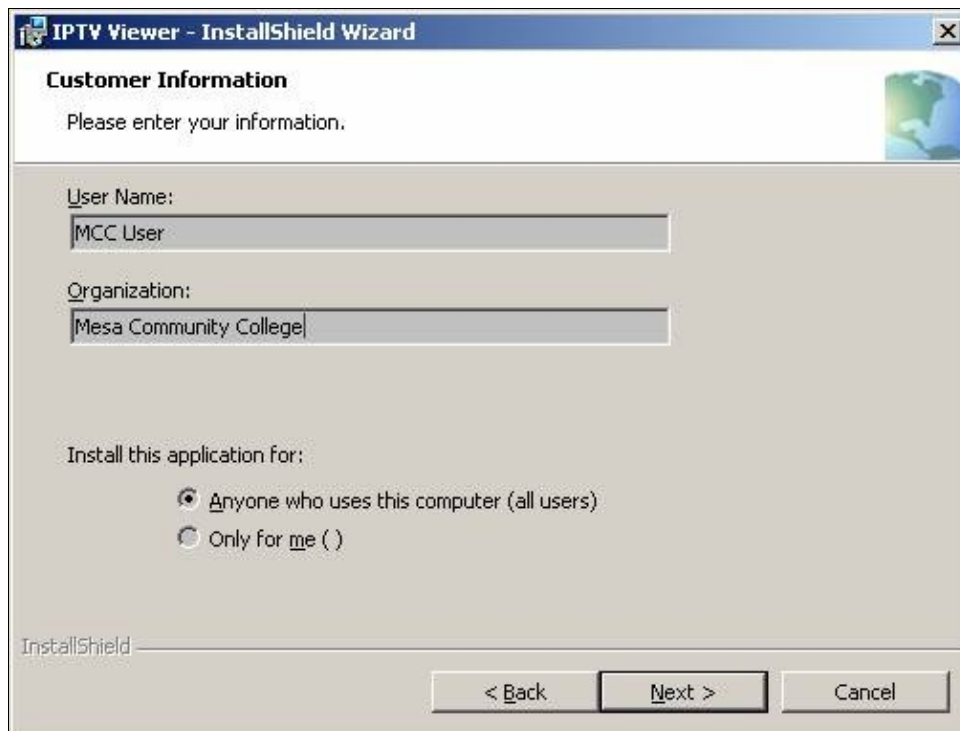


Click the "next" button at the bottom. This brings up the license agreement screen:

IPTV_Setup_for_PCs_(Windows)



Make sure you select the radio button that says "I accept the terms in the license agreement" (as it is shown in the picture.) Once you've selected this, click "next" at the bottom. This brings you to the next screen:

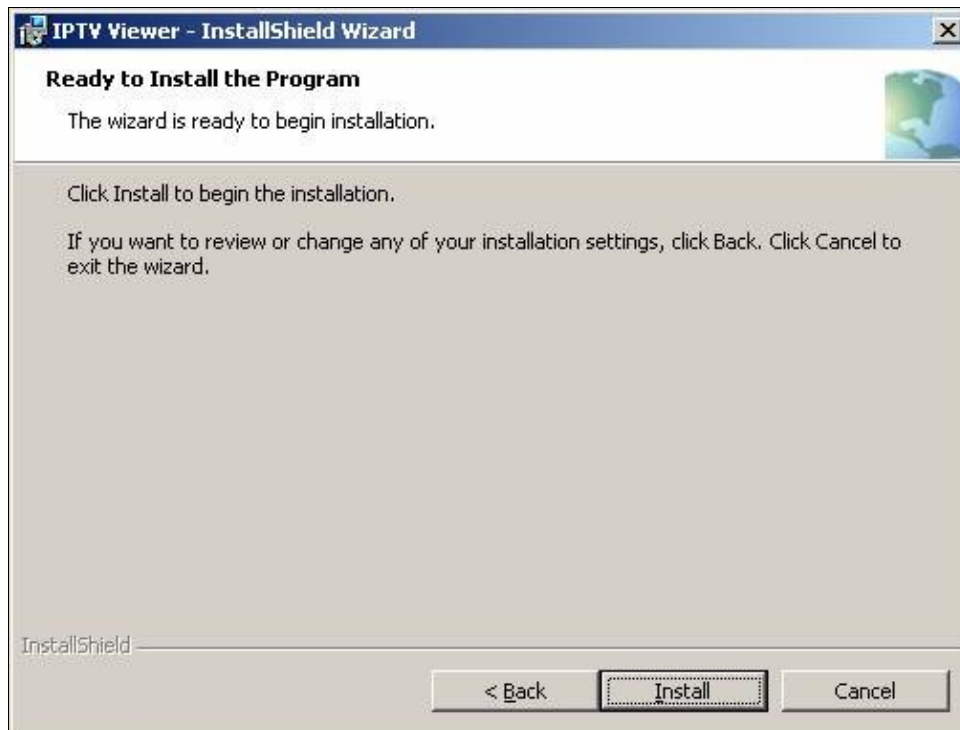


Here you may fill out a username and the name of the organization. Once you've done this, click the "next" button at the bottom. That will bring you to this screen:

IPTV_Setup_for_PCs_(Windows)

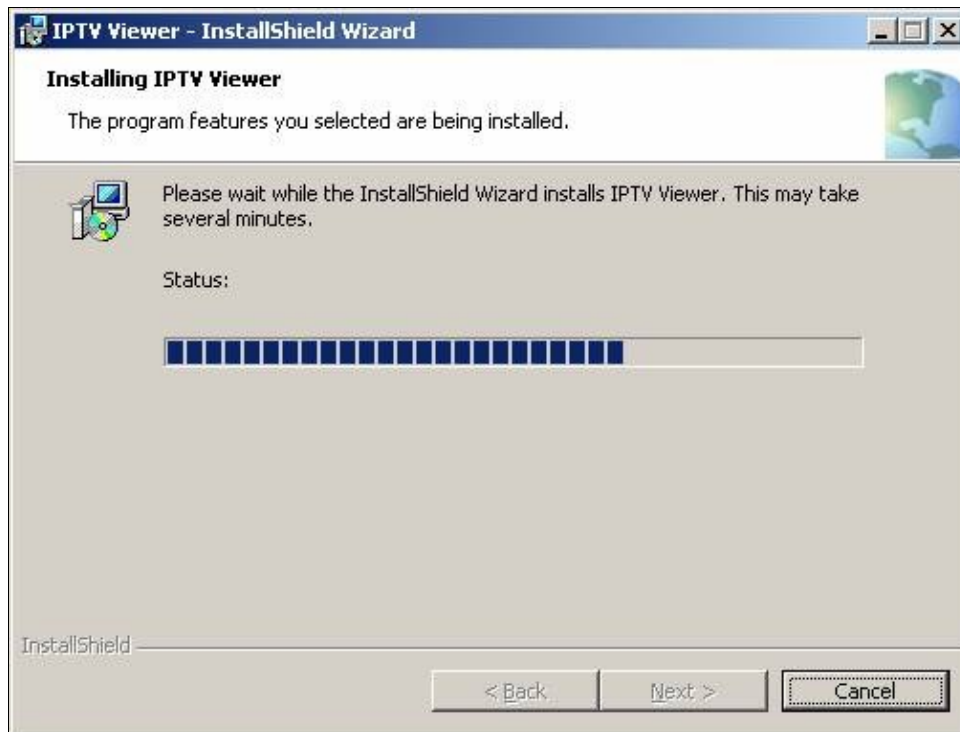


Click "next" at the bottom. That will bring you to this screen:

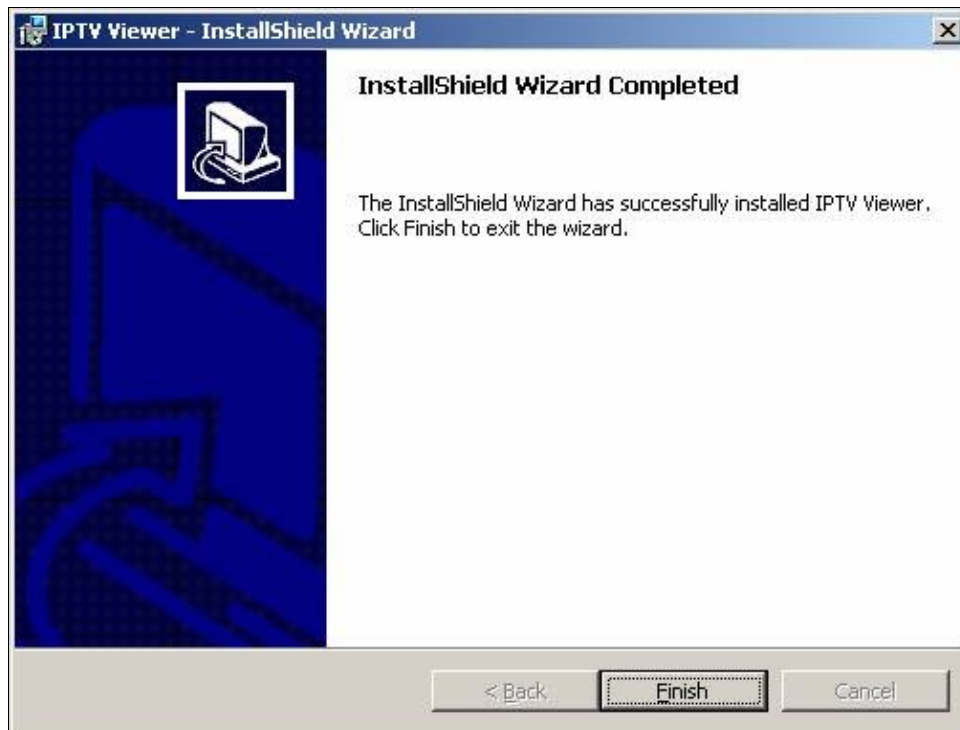


Click the "install" button at the bottom. You will see a screen showing you the status of the install that looks similar to this:

IPTV_Setup_for_PCs_(Windows)



When the installation has completed, the screen will change to this:



Click the "finish" button to complete this process.

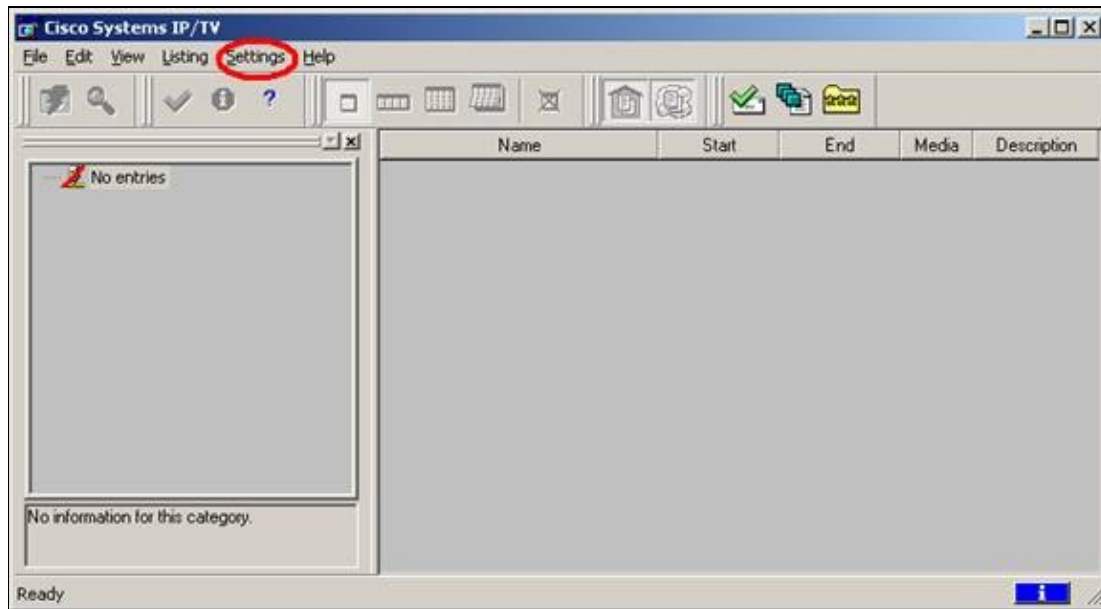
The installer will place an icon on your desktop that will allow you to launch the program. The icon looks like this:

IPTV_Setup_for_PCs_(Windows)

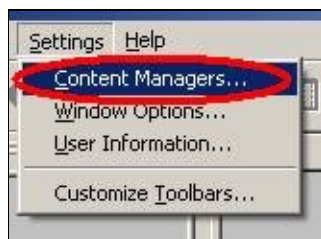


You can also access this program by clicking on your Start menu, select Programs, select Cisco IPTV viewer, and finally select Cisco IPTV Viewer - it will have a similar icon to the one pictured above, just slightly smaller.

Double click the Cisco IPTV viewer icon on your desktop to launch the program. When it has launched, you will see a window that looks like this:

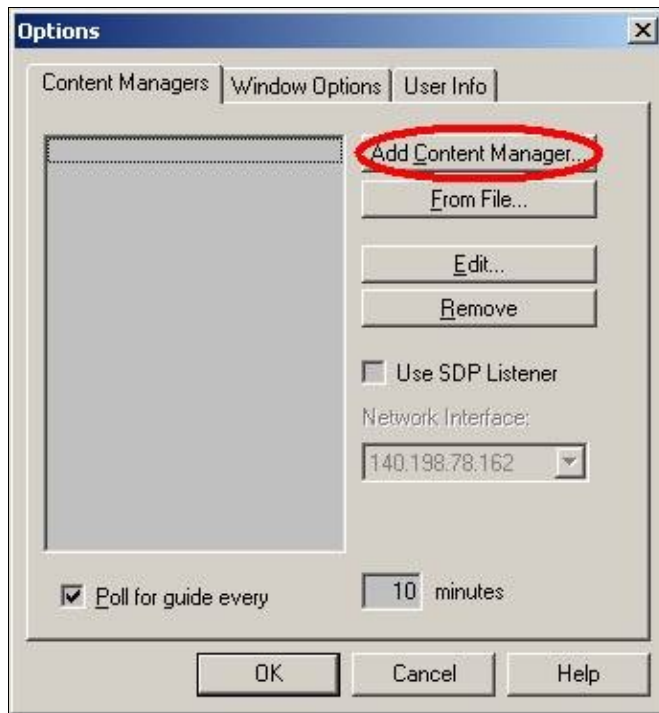


Click on the "Settings" menu (circled in red above). Next, click on "Content Managers" (pictured below and circled in red)

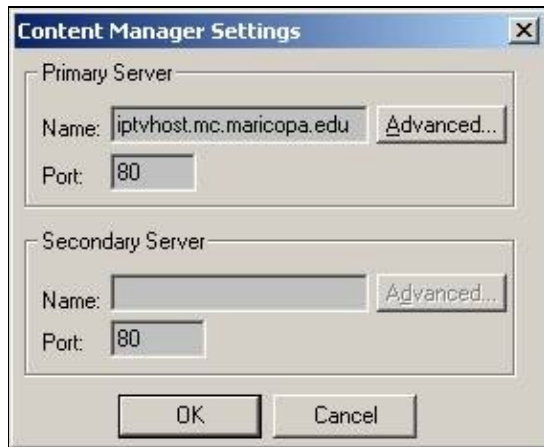


When you've selected "Content Managers" you will see a screen like this:

IPTV_Setup_for_PCs_(Windows)



Click on the "Add Content Manager" button (circled in red above) and that will bring you to a screen that looks like this:

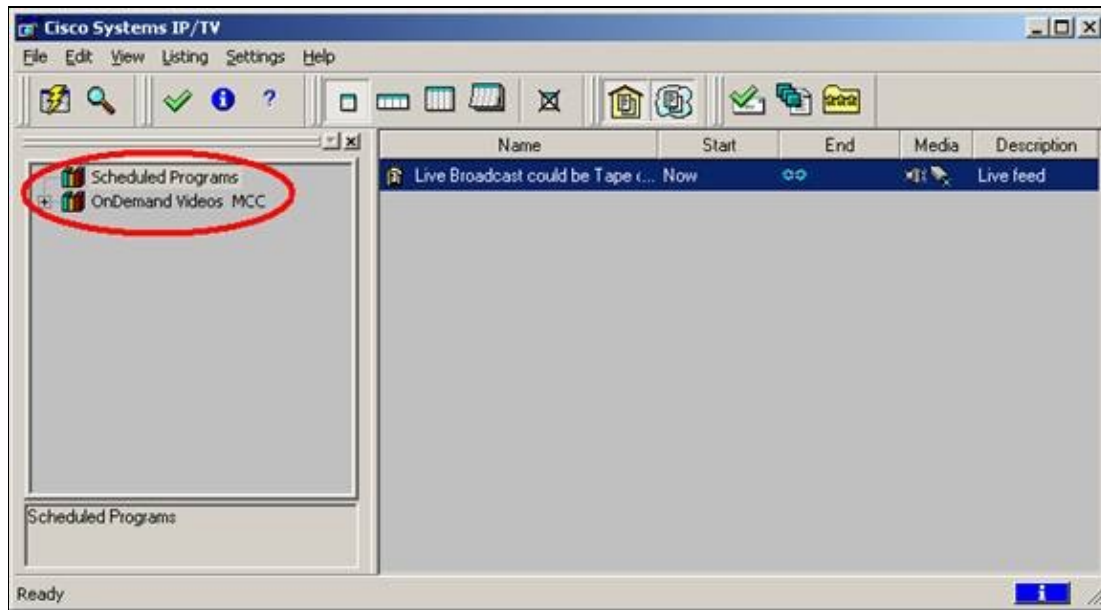


In the "Name" field, type iptvhost.mc.maricopa.edu - just like it is in the picture above. When you've completed this, click "OK" at the bottom. That will bring you back to this screen:

IPTV_Setup_for_PCs_(Windows)



Click "OK" at the bottom. This will bring you back to the main IPTV viewer screen. You will notice that there are some changes now (circled in red below):



Your IPTV viewer is now configured to view video from MCC's IPTV server.