

## MacTV\_1.2\_Installation\_Instructions\_for\_OSX

Download the MacTV installer (1MB).



Drag the MacTV.sit installer to your APPLICATIONS folder.



Launch the MacTV installer by double clicking the MacTV.sit icon.

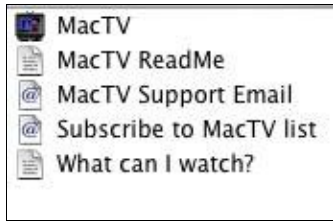


A new folder will be created in your APPLICATIONS folder called MacTV1.2.



These files are now in the MacTV 1.2 folder in the APPLICATIONS directory.

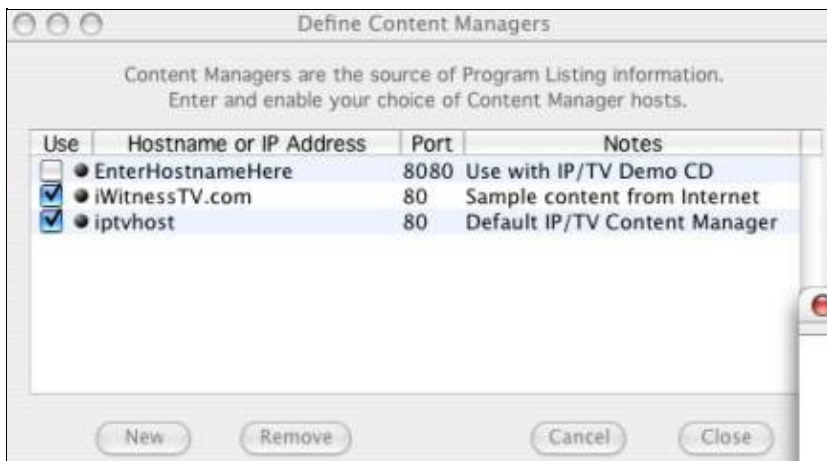
## MacTV\_1.2\_Installation\_Instructions\_for\_OSX



Double click the MacTV executable and wait for the program to load.

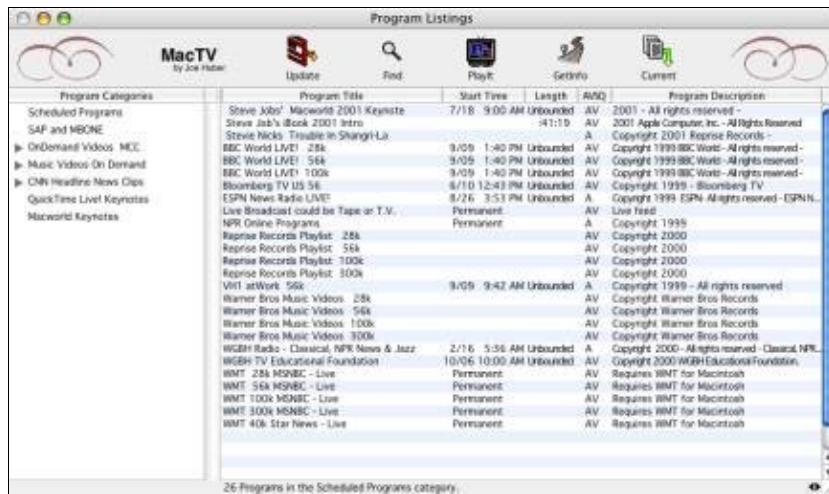


The initial launch may take a few minutes as the program browses the network for IPTV servers and channels. Open the MacTV menu at the top, scroll down to Content Manager and open it. Once the 'Define Content Managers' window is open, click the NEW button at the bottom left and enter IPTVHOST and port 80. Close this window when finished.



The MacTV software will then contact the MCC iptv host and propagate the tables with available programming.

## MacTV\_1.2\_Installation\_Instructions\_for\_OSX



Next, choose the program you wish to view and double click it.

Note: Video and audio lag may occur if the campus network is at capacity.