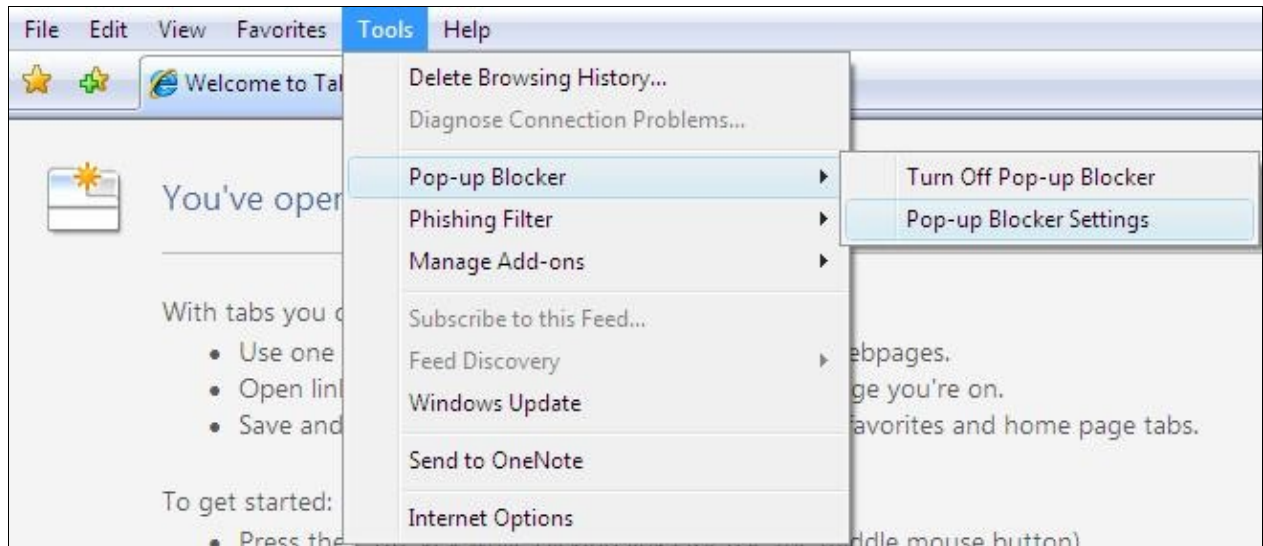


These instructions will help you configure your laptop for access to MCC's student wireless network, **mesacc**. The **mesacc** wireless network is available to students free of charge, but you will need to log in with your MyMCC username and password in order to connect to it. If you have not yet created a MyMCC account, please visit [this page](#) to do so.

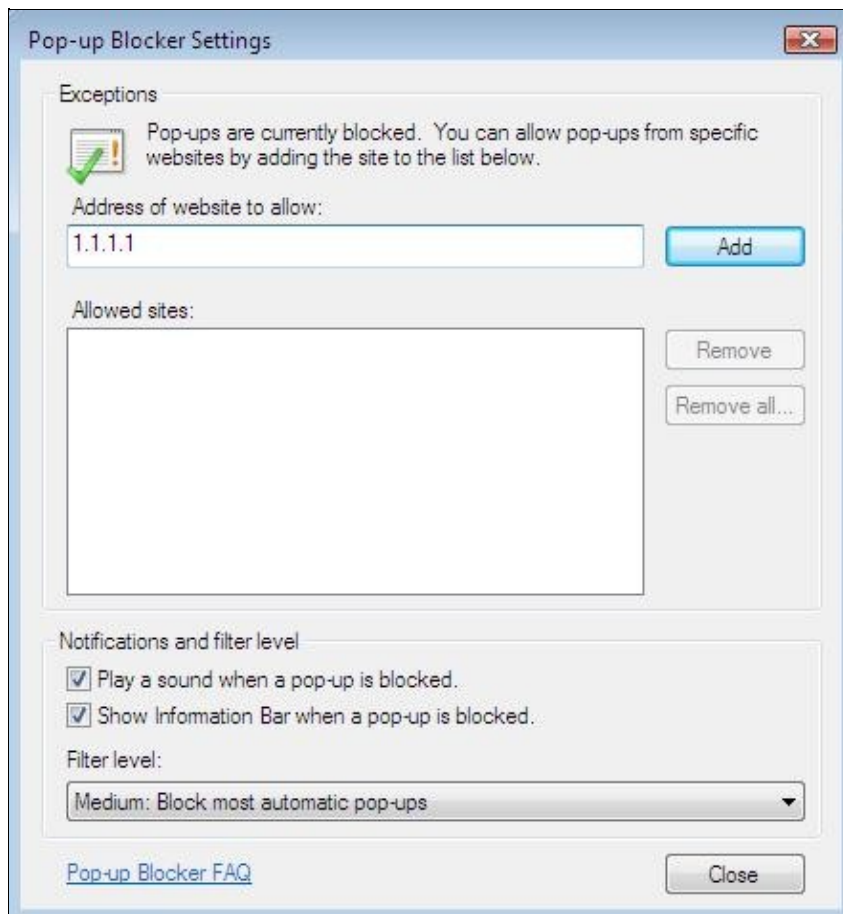
Instructions for Connecting to the mesacc Wireless Network (Windows Vista)


Step 1: Allow pop-ups for the **mesacc** wireless network. When you log in to the **mesacc** wireless network, you are provided with a popup window that allows you to log out properly when you are done. The following steps will assist you with configuring Internet Explorer to allow the **mesacc** logout popup. In Internet Explorer, click on the "Tools" menu (alt + t if the menu bar is not available), choosing "Pop-up Blocker", and then clicking on "Pop-up Blocker Settings".




Step 2: At the "Pop-up Blocker Settings" window, type in **1.1.1.1** in the "Address of website to allow:" box and click "Add." Click "Close" when done.

Student_Wireless



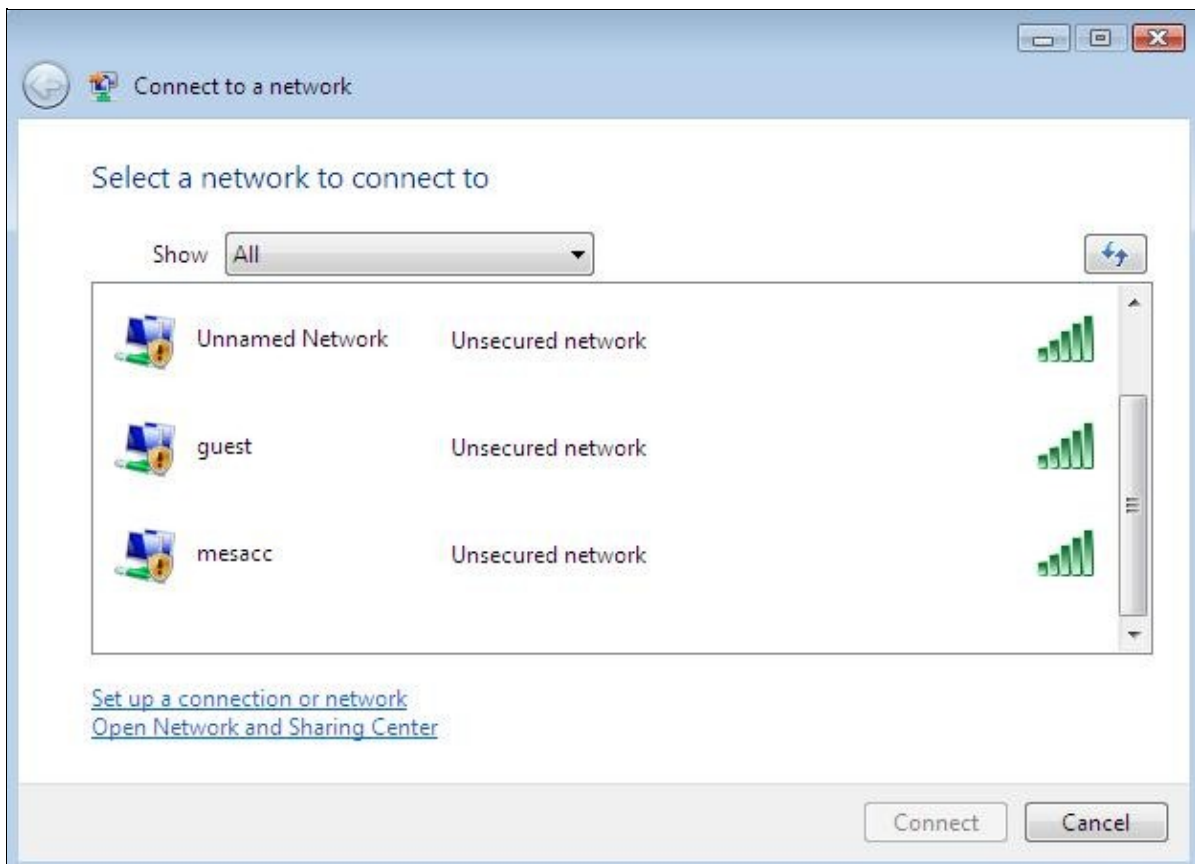
Step 3: Position your mouse cursor over the networking icon  in your system tray. Windows will inform you that there are wireless networks available.



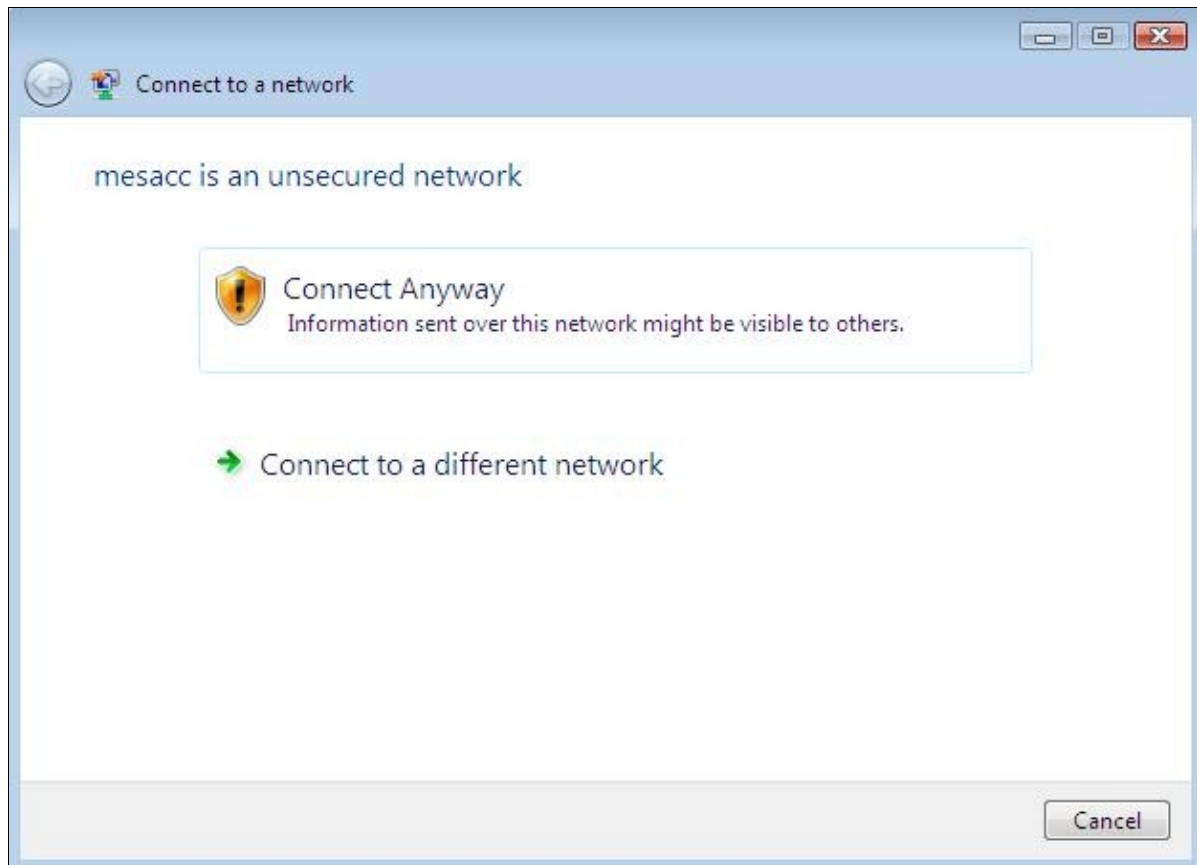
Step 4: Click on the networking icon  once and choose "Connect to a network" on the menu it provides to you.



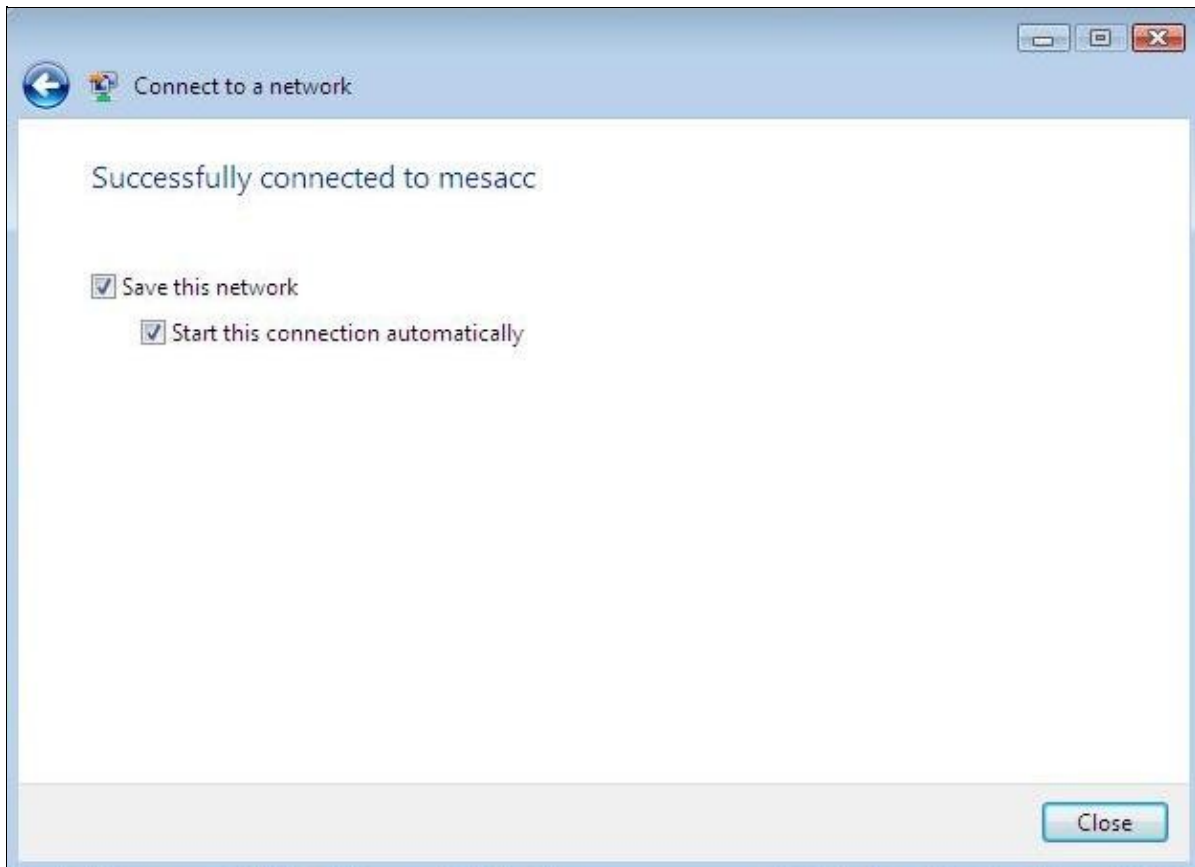
Step 5: The screen provided will show you the networks detected by your wireless device. Choose the network named **mesacc** and click "Connect".



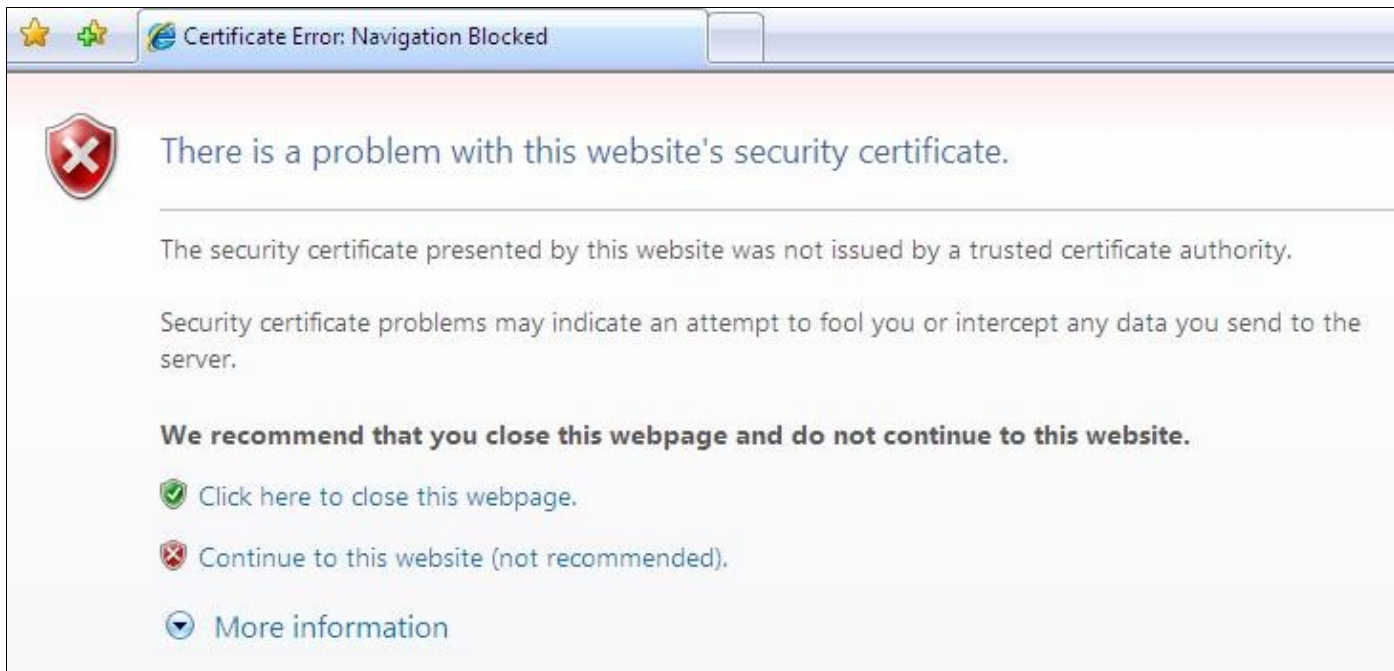
Step 6: You will be notified that the **mesacc** network is an unsecured network. Choose "Connect Anyway".



Step 7: At the next screen, choose to "Save this network". Optionally, you can choose to have Windows "Start this connection automatically" when in range.



Step 8: Open Internet Explorer. You will be presented with a page indicating that the security certificate was not issued by a certificate authority. This is because the site's security certificate is provided locally and is not cause for alarm. Click on "Continue to this website".



Step 9: If presented with a "Security Information" notification box saying, "This page contains both secure and nonsecure items", click "Yes".



Step 10: The "Welcome to MCC's Wi-Fi Network" will load. Type in your MyMCC username and password and click "Submit".

MESA COMMUNITY COLLEGE

Welcome to MCC's Wi-Fi Network

Create MyMCC Account Forgot my password MCC Help

User Name:

Password:

Submit

Step 11: After logging in, a second, smaller Internet Explorer window will appear. This window allows you to logout when you are done using MCC's wireless network. When you are done, click "Logout" to ensure a smooth login process the next time you want to use the **mesacc** wireless network.



Note: If you don't click the "Logout" button at the end of your session, you may experience problems the next time you attempt to log in. If you close the Logout window accidentally, you can return to it by going to <https://1.1.1.1/logout.html>".